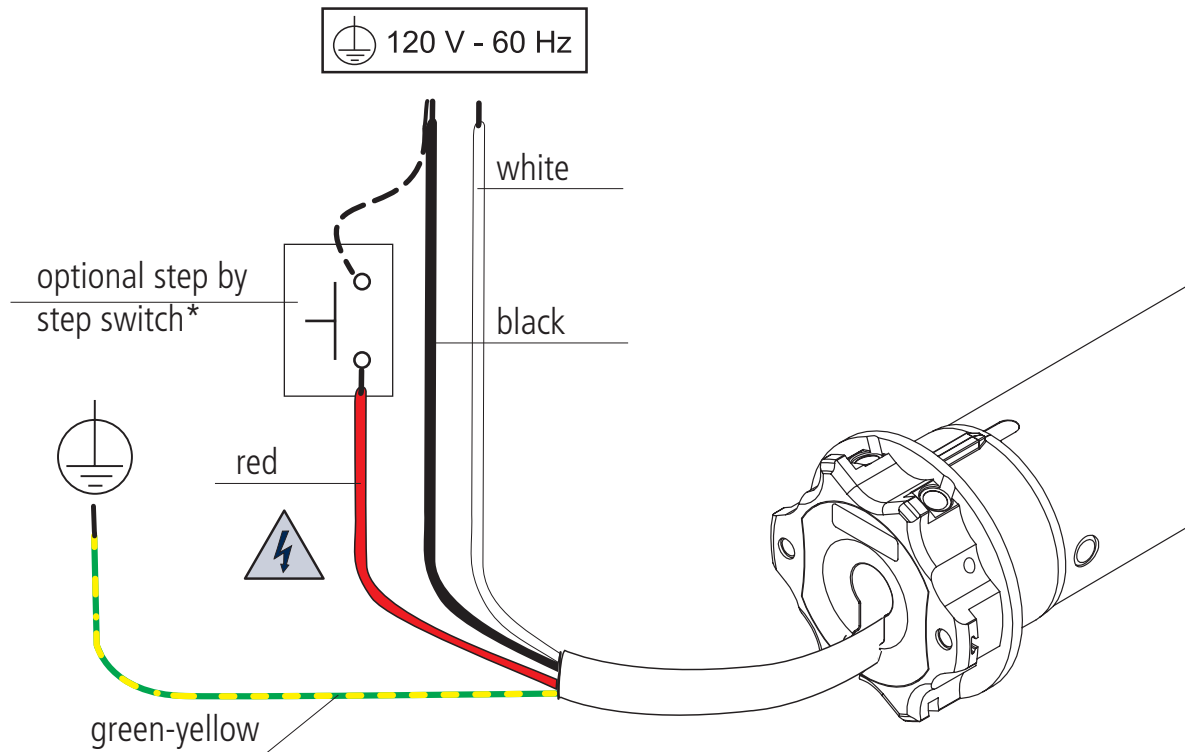


RED WIRE CONNECTION

Electrical connections



If not used, the red wire must be insulated.
It is dangerous to touch the red wire when the motor is powered.

* Installing this button is optional. The connection can be done differently using the black wire or the white wire. The button affords the possibility to command the motor in stepping mode (up, stop, down, stop, up, stop, down, stop..)

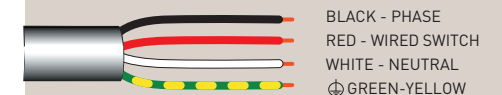
Motors:

- Tronic RX
- Clima Plus RX
- Modo RX
- Wave RX
- Wave Lock RX
- Senso RX
- Ocean RX
- Garda RX
- Plug&Play Short RX
- Open ZRX
- Ora ZRX
- Rebis ZRX

230 V 50 Hz

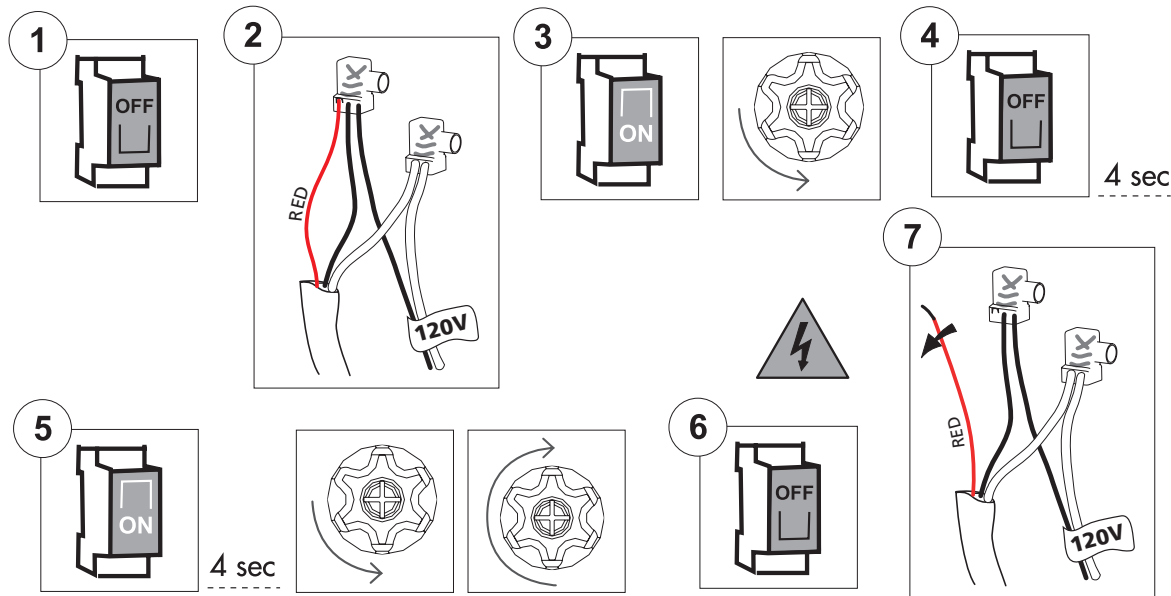


120 V - 60 Hz



RED WIRE CONNECTION

Full memory cleaning with the red wire



Do this operation only in case of emergency, if all remote controls are no longer operating. To delete the memory we have to access the red wire of the motor.

The sequence of this operation is the following:

1. Disconnect the power supply from the motor, via the main switch for example.
2. Connect the red motor wire to the black wire (phase) or to the white wire (neutral).
3. Connect the power supply to the motor, which rotates briefly in one direction.
4. Disconnect the power supply from the motor for at least 4 seconds.
5. Connect the motor to the power supply, after about 2 seconds the motor performs a short rotation up or down. After about 6 seconds the motor performs a long rotation in the opposite direction.
6. Disconnect the power supply from the motor.
7. Separate the red wire from the black/white wire. Insulate the red wire, in an appropriate way, before reconnecting the power supply.

At this point it is possible to proceed with the setting of the first remote control.

Motors:

- Tronic RX
- Clima Plus RX
- Modo RX
- Wave RX
- Wave Lock RX
- Senso RX
- Ocean RX
- Garda RX
- Plug&Play Short RX
- Open ZRX
- Ora ZRX
- Rebis ZRX

230 V - 50 Hz

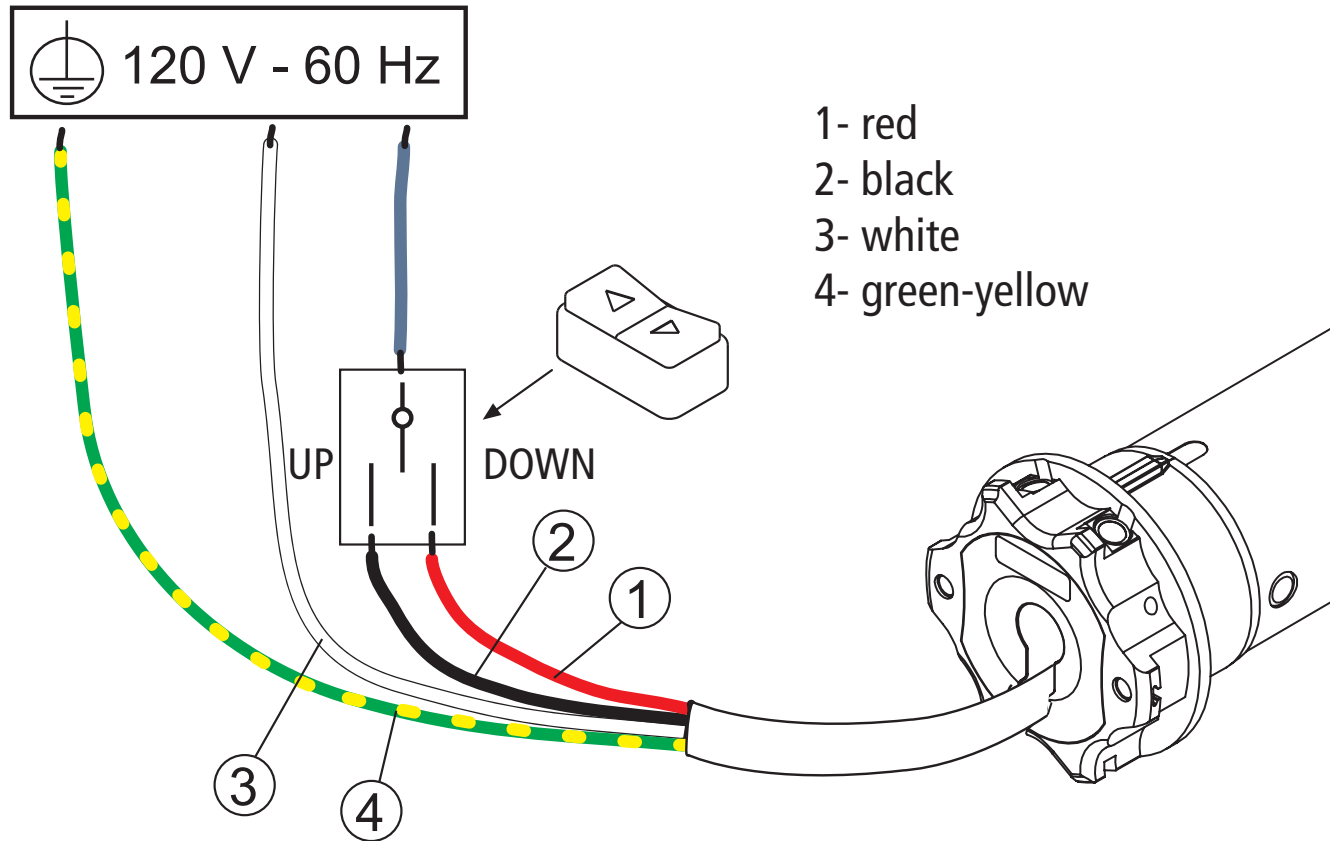


120 V - 60 Hz



STANDARD WIRING

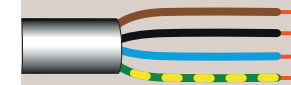
Electrical connections



Motors:

- Plug&Play
- Plug&Play Plus
- Plug&Play Ocean Easy
- Plug&Play Safe Easy
- Plug&Play Short
- Wave Wire
- Senso Wire
- Ocean
- Garda
- Micro
- Roll

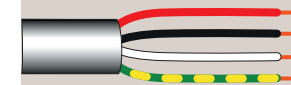
230 V 50 Hz



BROWN - ROTATION R1
BLACK - ROTATION R2
BLUE - NEUTRAL
⊕ GREEN-YELLOW



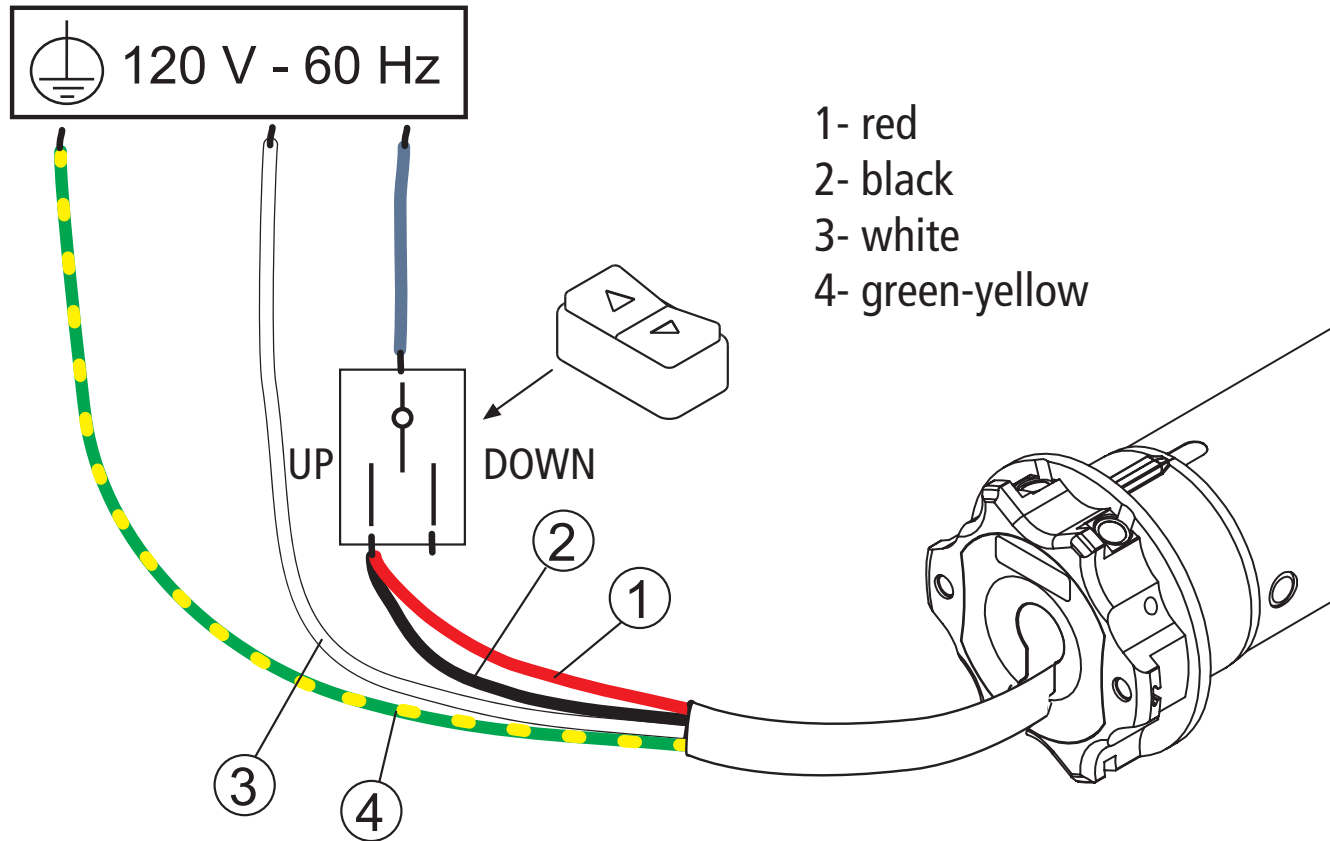
120 V - 60 Hz



RED - ROTATION R1
BLACK - ROTATION R2
WHITE - NEUTRAL
⊕ GREEN-YELLOW

STANDARD WIRING

Restoring the original configuration with wired connection



To restore the original motor configuration perform the procedure as described below:

1. Connect both the red and black motor wires under the same switch, e.g. UP.
2. Press the UP button for at least 2 seconds.
3. Disconnect and then restore the original control switch electrical connections

Motors:

- Plug&Play Plus
- Plug&Play Ocean Easy
- Plug&Play Safe Easy
- Wave Wire
- Senso Wire

230 V 50 Hz



120 V - 60 Hz

